

## **WARNING!!**

The attached Gold Medal Manual is for reference only and is not intended for any other purpose. The information contained in these on line manuals is subject to change at any time. Improvements are always being made to Gold Medal equipment and this information may not be the latest available for your purposes. It is critical that you call Gold Medal Products technical service department at 1-800-543-0862 for any questions about machine operations, replacement parts, or any service questions. Neither Gold Medal nor Snappy Popcorn represent that these on line manuals contain the most current information available for the product represented.

Part No. 49659  
Revised April 2002

# Master Pop 6 Oz. Popper

Popcorn Machine Instruction Manual  
Models #2450, #2450D




 **GOLD MEDAL**®


**FUNFOOD EQUIPMENT & SUPPLIES**


Cincinnati, OH 45241-4807 USA.


# SAFETY PRECAUTIONS

	<b>⚠ CAUTION</b>
	This equipment is designed and sold for commercial use only. This equipment is not to be used by the consumer in home use. Do not allow direct contact of this equipment by the public when used in food service locations. Only personnel trained and experienced in the equipment operation may operate this equipment. Carefully read all installation instructions before operating the equipment.

	<b>⚠ WARNING</b>
	Always wear safety glasses when servicing this equipment.

	<b>⚠ WARNING</b>
	To avoid serious burns, do NOT touch the kettle while it is hot.

	<b>⚠ WARNING</b>
	Any alterations to this equipment will void the warranty and may cause a dangerous situation. NEVER make alterations to the equipment. Make sure all machine switches are in the OFF position before plugging the equipment into a receptacle.

	<b>⚠ DANGER</b>
	Machine must be properly grounded to prevent electrical shock to personnel. Do NOT immerse the kettle, warmer, or any other part of this equipment in water. Always unplug the equipment before cleaning or servicing.

**NOTE**

The information, specifications and illustrations contained in this manual represent the latest data available at time of publication. Right is reserved to make changes as required at the discretion of Gold Medal Products Company without notice.

## INSTALLATION INSTRUCTIONS

### SETUP

Your new MASTER POP Popcorn Machine is completely assembled. Remove all packing material and tape before starting operation.

## OPERATING INSTRUCTIONS

### CONTROLS AND THEIR FUNCTIONS

There are three switches on the popper.

#### **LIGHT AND WARMER SWITCH**

Turns on the heat light.

#### **KETTLE MOTOR SWITCH**

Turns on the motor which drives kettle agitator shaft.

#### **KETTLE HEAT SWITCH**

Turns on the kettle heat element

### AMOUNT OF POPCORN AND OIL

Your new popper is equipped with a six ounce [177 ml] corn measure cup. We recommend flavored and colored coconut oil. Popcorn popped in coconut oil stays fresh longer. Coconut oil does not leave black deposits in your kettle like other oils.

Corn charge - 6 oz. [177 ml]

Oil charge - 1.6 to 2.0 oz. [60 ml]



Flavacol - 1 tablespoon [8 cc]

### POPPING INSTRUCTIONS



1. Turn **KETTLE HEAT** and **KETTLE MOTOR** switch "ON".
2. Make test pop with 3 kernels of corn and 1 oz. [30 ml] of oil.
3. Pour pre-measured popcorn and oil pouch into kettle.
4. When corn has popped, dump kettle.
5. Repeat steps 3 and 4 for additional batches; always pop 3-5 batches for best popcorn.

## CARE AND CLEANING


	<p data-bbox="786 247 1032 285"> <b>DANGER</b></p> <p data-bbox="488 302 1243 401">Unplug your machine before cleaning glass panel and case. Never immerse the kettle in water. This will ruin the electrical components and automatically void the guarantee.</p>
---	---

Each time you finish a series of poppings, wipe the outside of the kettle with a soft cloth to remove any oil drippage on the outside of the kettle. After you finish popping for the day, allow kettle to cool until it is not too hot to handle, but still warm. With a cloth, wipe out the inside of the kettle, kettle lid, crossbar, outside and underneath of the kettle.

Cleaning the cabinet of your machine is easy. Wipe excess grease from the glass using a clean cloth. Wipe the outside of the machine also.

**NOTE:** Never use a glass or plastic cleaner that contains ammonia. It will crack the plastic on the machine.

## MAINTENANCE INSTRUCTIONS

	<b>⚠ CAUTION</b>
	<p>THE FOLLOWING SECTIONS OF THIS MANUAL ARE INTENDED ONLY FOR QUALIFIED SERVICE PERSONNEL WHO ARE FAMILIAR WITH ELECTRICAL EQUIPMENT. THESE ARE NOT INTENDED FOR THE OPERATOR.</p>
	<b>⚠ WARNING</b>
	<p>Adequate eye protection must be used when servicing this equipment to prevent the possibility of injury.</p>
	<b>⚠ DANGER</b>
	<p>Do NOT immerse the kettle, warmer, or any other part of this equipment in water. Unplug your machine before servicing.</p>

### ACCESSORIES

Description	Part Number
Corn Measure Cup	49049
A-Scoop	47145
Flavacol Cup	47678

## ORDERING SPARE PARTS

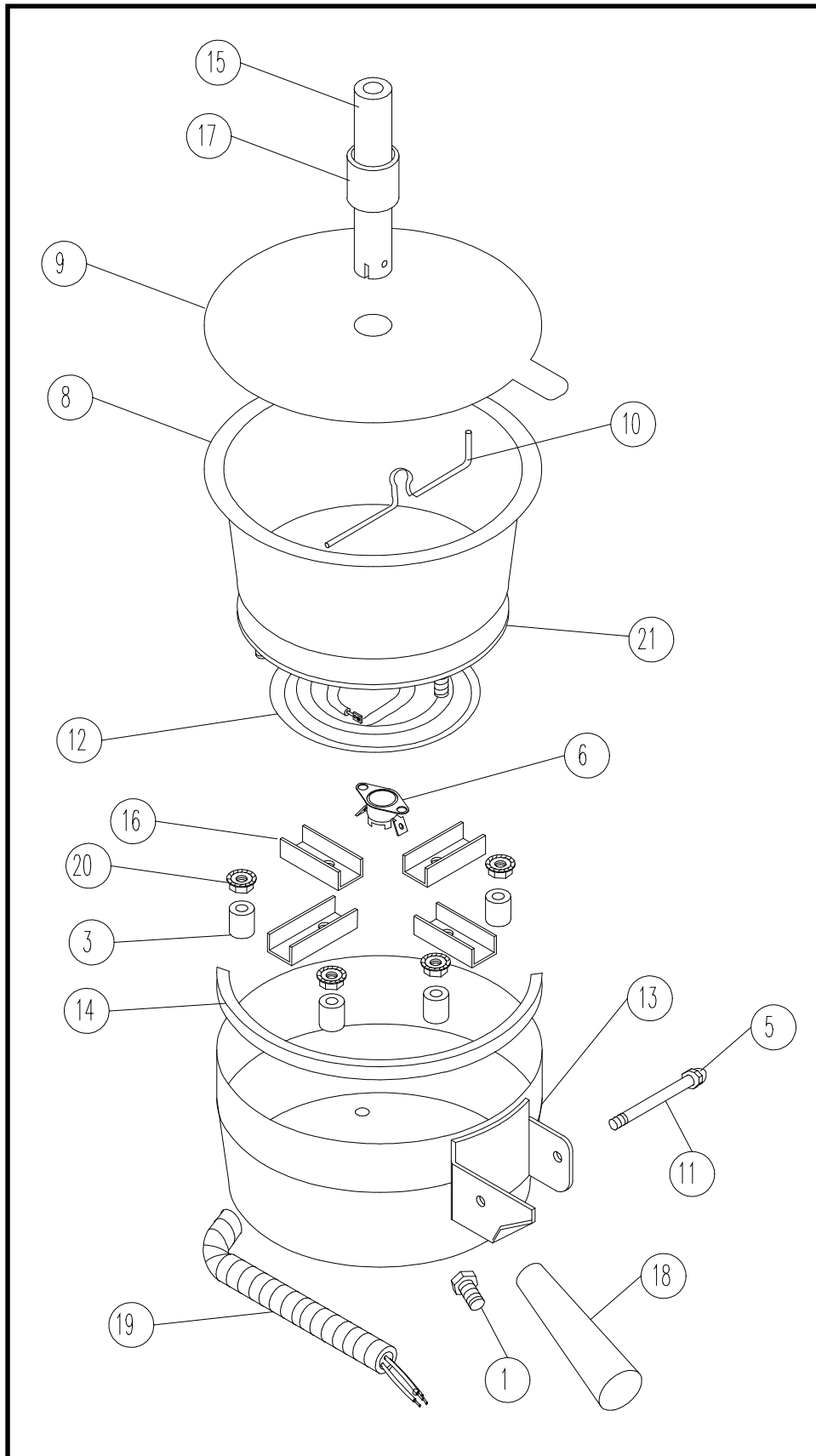
1. Identify the desired part by checking it against the photos, illustrations, and/or the parts list.
2. When ordering, please include part number, part name, and quantity desired.
3. Please include your model name and machine serial number (located on the machine nameplate) with your order.
4. Address all parts orders to:

Parts Department  
 Gold Medal Products Co.  
 10700 Medallion Drive  
 Cincinnati, Ohio 45241-4807  
 or, place orders at:  
 (800) 543-0862  
 (513) 769-7676  
 Fax: (513) 769-8500  
 E-mail: [info@gmpopcorn.com](mailto:info@gmpopcorn.com)

**PARTS LIST - CABINET ASSEMBLY**

<b>Item No.</b>	<b>Model 2450 Part No.</b>	<b>Model 2450D Part No.</b>	<b>Description</b>	<b>Quantity</b>
1	22038	22038	Lead-in-Cord, 15 Amp	1
2	42532	42532	Switch, SPST Rocker Type	3
3	42947	42947	50 Watt Flood Light, Coated	1
4	49123	49123	Crutch Tip	4
5	49656	49656	Glide	4
6	49100	49100	Old Main Pan	1
7	49652	49652	Dome	1
8	49653	49653	Bottom Plate Weldment	1
9	49817	49817	Hanger Arm	1
10	49519	49519	Front Glass	1
11	49518	49518	Side Glass	2
12	49651	49651	Motor Plate	1
13	49834	49834	Drive Motor	1
14	49837	49837	Lamp Holder	1
15	49509	49509	Rigid Channel	6
16	49510	49510	Rigid Channel	4
17	67512	67512	Magnet	1
18	49655	49655	Drop Panel	1
19	49511	49511	Rigid Channel	2
20	76026	76026	Strain Relief	1
21	49657	49657	Shipping Carton	1
22	49002	49002	Adjusting Screw	1
23	49650		Corner Post	4
		49650	Corner Post	2
24	47120		Knob Lid Lift	1
		47120	Knob Lid Lift	3
25		49395	Plex Door NM Hinge	2
26		41359	LH Female NM Hinge	2
27		41360	LH Male NM Hinge	2
28		41373	RH Female NM Hinge	2
29		41374	RH Male NM Hinge	2
30		49664	Left Rear Corner Post	1
31		49665	Right Rear Corner Post	1
32		49666	Door Stop	1
33		50013	Magnet	2

# 6 Oz. KETTLE ASSEMBLY

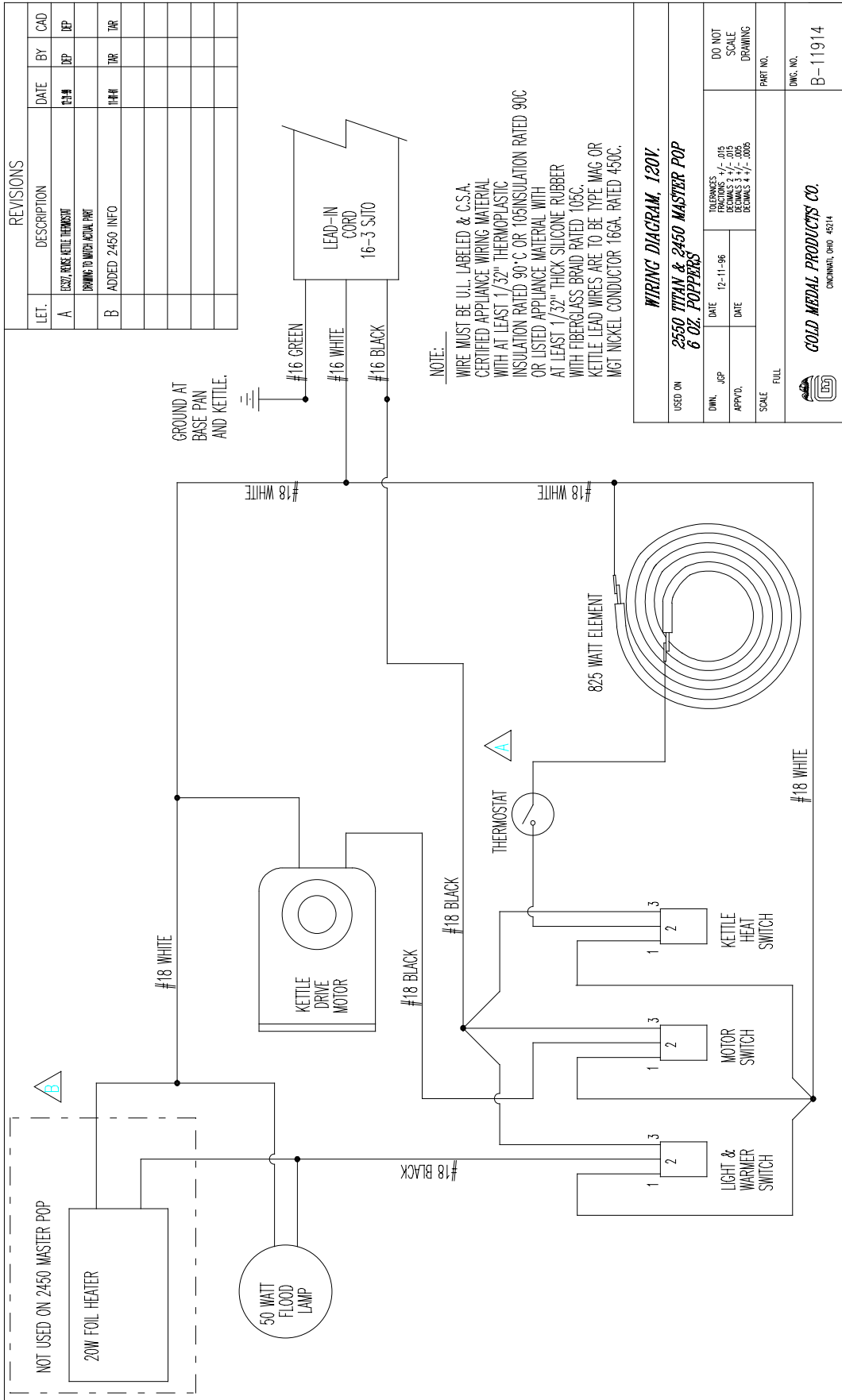




## PARTS LIST - 6 Oz. KETTLE ASSEMBLY

Item No.	Part No.	Description
	49836	6 Oz. Kettle Complete
1	20051	Hex Bolt, $\frac{3}{8}$ -16 x $\frac{3}{4}$ "
2	41742	Set Screw, 10-32 x $\frac{3}{16}$ "
3	42297	Spacer, Kettle
4	46241	Conduit Connector, 90°
5	46528	Acorn Nut
6	76089	Thermostat
7	47373	Conduit Connector, Straight
8	49800	Kettle, Plated
9	49820	Kettle Lid
10	49822	Stir Rod
11	49823	Pivot Bar
12	49824	Heat Element, 925 Watt, 120 Volt
13	49828	Shell, Plated
14	49829	Gasket, Kettle
15	49839	Agitator Assembly
16	49841	Element Clamp
17	49854	Agitator Weight
18	76075	Plastic Handle
19	82107-17	SS Flex Conduit, 17" Long
20	49363	Serrated Hex Nut, #10-24

# ELECTRICAL SCHEMATIC



## WARRANTY

WE WARRANT to the original purchaser the Gold Medal equipment sold by us to be free from defects in material or workmanship under normal use and service. Our obligation under this warranty shall be limited to the repair or replacement of any defective part for a period of six (6) months from the date of sale to the Original Purchaser with regard to labor and two (2) years with regard to parts and does not cover damage to the equipment caused by accident, alteration, improper use, volt-age, abuse, or failure to follow instructions.

THIS WARRANTY IS IN LIEU OF ALL OTHER WARRANTIES EXPRESSED OR IMPLIED, AND OF ALL OTHER OBLIGATIONS OR LIABILITIES ON OUR PART, INCLUDING THE IMPLIED WARRANTY OF MERCHANTABILITY. THERE ARE NO WARRANTIES WHICH EXTEND BEYOND THE DESCRIPTION ON THE FACE HEREOF. We neither assume, nor authorize any other person to assume for us, any other obligation or liability in connection with the sale of said GOLD MEDAL equipment or any part thereof.

The term "Original Purchaser" as used in this warranty shall be deemed to mean that person, firm, association, or corporation who was billed by the GOLD MEDAL PRODUCTS COMPANY, or their authorized distributor for the equipment.

THIS WARRANTY HAS NO EFFECT AND IS VOID UNLESS THE ORIGINAL PURCHASER FIRST CALLS GOLD MEDAL PRODUCTS COMPANY AT 1-800-428-2676 TO DISCUSS WITH OUR SERVICE REPRESENTATIVE THE EQUIPMENT PROBLEM, AND, IF NECESSARY, FOR INSTRUCTIONS CONCERNING THE REPAIR OR REPLACEMENT OF PARTS.

*NOTE: This equipment is manufactured and sold for commercial use only.*



**GOLD MEDAL PRODUCTS COMPANY**  
10700 Medallion Drive  
Cincinnati, Ohio 45241-4807 USA